

Tune into the SJYA

mp3 Play List

ST. JOSEPH YOUTH ALLIANCE

2007 Annual Report



Our Values:

- Advocacy
- Collaboration
- Commitment to Making a Difference
- Fiscal Responsibility
- Identifying Community Needs
- Quality Outcomes
- Resource Identification and Development



Mission:

Engaging community partners to improve the lives of children and families.

St. Joseph Youth Alliance

3308 South Leonard Road

St. Joseph, MO 64503

Phone: 816 232-0050

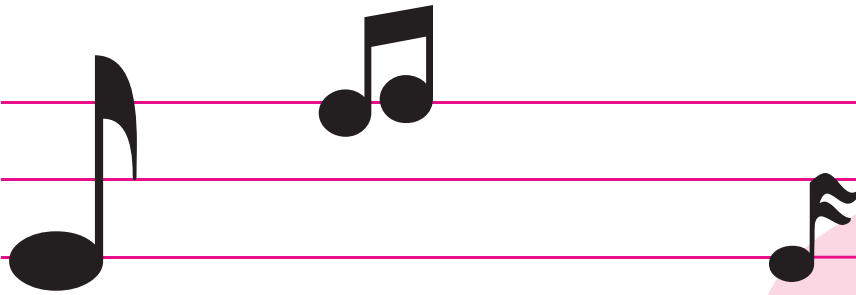
Fax: 816-390-8536

www.youth-alliance.org



St. Joseph Youth Alliance Board

Gary Hillibrand, President Preferred Family Health Care
Colin Cline, Vice President Grandparent
Dan Brachman, Treasurer Individual
Ray Carson, Secretary Noyes Home
Andrea Aderton..... Family Guidance Center
Linda Boring Missouri Department of Social Services
Jason Callaway..... Vice Principal, Central High School
Kay Denver St. Joseph School District
Jerry Lau M & I Bank
Rev. Roger Lenander..... First Lutheran Church
Barbara Martin..... Individual
Sharon Ritchey..... City of St. Joseph
Jack Teegarden..... Individual



From the Executive Director Robin Hammond



October 2007

In thinking about a theme for this year's annual report, items that kept surfacing included **Monitoring Performance, Maintaining Partnerships, Maximizing Potential** . . . thus the theme of MP³. Throughout this report, we will expand on each of these concepts among many others.

Certainly, **Maintaining Partnerships** is a key concept and one that is, first and foremost, linked to our mission of 'engaging community partners to improve the lives of children and families'. To improve lives, we must constantly look for innovative ways to **Maximize Potential** of our children and youth, **Mobilize People** in the community to advocate and educate community leaders about concerns that impact the future of our children and youth, and set examples by **Modeling Prevention** and **Mentoring Parents**.

Throughout the past year, the St. Joseph Youth Alliance has tried to capture the essence of the MP³ concepts through services, technical assistance, education and programming. This report attempts to capture just a glimpse of the progress we have made and the impact that our organization has on the lives of the people we touch.

A handwritten signature in black ink that reads "Robin Hammond".

- Robin Hammond

Introduction

Since 1991, the St. Joseph Youth Alliance has been striving to positively impact issues relating to children and youth. Over the years, each of the programs and services have systematically fallen into five emphasis areas, which now serve as the drivers for the organization's decision-making. The areas are: Crisis Intervention, Early Childhood, Substance Abuse Prevention, Youth Mentoring, and Youth Asset Development.

For each of the emphasis areas, **Marketing and Publicity** are crucial for addressing complex social, behavioral and environmental change for families, children and youth. Therefore, a segment under each emphasis area is devoted to community awareness efforts. These efforts include media campaigns, television and/or radio advertisements, billboards, involvement in locally sponsored events, and in promotion of the many programs and services addressing critical issues for families, such as substance abuse, child abuse and neglect, youth employment, kindergarten readiness and so much more.

Crisis Intervention

Crisis intervention services provided by the St. Joseph Youth Alliance are some of the most critical services provided by the organization. Crisis intervention is achieved by helping families in **Managing Priorities, Maximizing Potential, Mentoring Parents** and **Modeling Prevention** – many of the MPs that you will see surface throughout the Alliance's programs.

The Alliance provides families and youth with support, resources, and hope for a better future through many avenues, but primarily through the Family Resource Advisory Council and Provider Network, mentoring programs, and home visits provided through the Family Connections Program. Often early intervention results in a better outcome; and the St. Joseph Youth Alliance serves as a link between families and appropriate timely services and resources, helping them avoid major crises.

Early Childhood

Early childhood development has been a core element of the St. Joseph Youth Alliance from the beginning, with a focus on improving the education and general life experiences of young children – to **Maximize Potential**. The St. Joseph Youth Alliance has two priorities in this area – quality child care and school readiness. To ensure that these issues are addressed, the Alliance organizes and/or sponsors child care provider training, provides technical assistance and scholarships to individuals pursuing early childhood care career paths and aids child care facilities in meeting early accreditation requirements.





The Alliance also **Maintains Partnerships** to support efforts that identify ways to assess school readiness and to create awareness in the community about the roles that child care providers can play in preventing child abuse and neglect.

Substance Abuse Prevention

The use of tobacco, alcohol, and other drugs is one of the biggest problems facing young people in our community. The St. Joseph Youth Alliance is **Mobilizing People** through the St. Joseph Drug Free Community Coalition to take action. A huge component of substance abuse prevention focuses on education and awareness, which is addressed by the Alliance through **Marketing and Publicity**. The St. Joseph Youth Alliance also **Maintains Partnerships** with many agencies and organizations in the surrounding area to teach adults how to **Model Prevention**. The Youth Alliance educates youth and adults on the harms of substance abuse, particularly related to the use of alcohol, tobacco and other drugs, such as methamphetamines. The role of the St. Joseph Youth Alliance in partnership with the St. Joseph Drug Free Community Coalition is to help youth in the community understand the dangers of using and reduce the use of alcohol and tobacco products and other drugs.



Youth Mentoring

Youth mentoring is about providing young people with positive adult role models in the community and in the workplace. The St. Joseph Youth Alliance has two programs that have a youth mentoring focus – Journey to Unite Mentors and Parents (JUMP) and Northwest Missouri Mentoring Partnership (MMP). Both programs have core elements that: provide young people with a sense of belonging; give them a sense that the community cares about them; and supports them in identifying and capitalizing on their potential. Key objectives of the programs are for youth to achieve academic success and have positive, long-term employment experiences. It is believed that by achieving these objectives, youth will have a strong foundation for future social success and will contribute back to society and the community. The role of the St. Joseph Youth Alliance is to **Mobilize People to Mentor Parents**, help young people **Maximize Potential** and teach adults how to **Model Prevention**. All of these efforts **Multiply Possibilities** for youth.

Youth Asset Development

Youth asset development requires a long-term investment in youth. It begins at birth and continues on into adulthood. The St. Joseph Youth Alliance is committed to supporting programs and services that empower youth, while at the same time set boundaries and expectations. Core elements of the programs and services in this emphasis area are designed to instill positive values and commitment to learning, as well as assist youth in using their time constructively to build social competencies and a positive self identity. The Youth Alliance is also actively engaging youth in service learning opportunities through Youth Empowerment through Service and the Youth Action Coalition. This is one way to **Maximize Potential** within our youth.

Highlights of the events, activities and programs for 2007 are shared in this report, along with data demonstrating progress toward identified results and benchmarks.

Crisis Intervention



Family Connections

Family Connections works to establish an integrated system for delivering health, family support, and social services to children and families in order to improve outcomes, reduce costs, and ultimately reduce the risks of child abuse and neglect. The goal is to reduce any possible risk of child abuse and neglect and to provide a more effective way of providing services.

To date, the St. Joseph Youth Alliance has been awarded a total of \$359,579 to reduce risks of child abuse and neglect in the greater St. Joseph area. Family Connections provides families and agencies with coordinated, non-duplicative services; improved interagency communication; and improved family rapport. Family Connections has experienced decreased hotlines among program participants and a reduction in Child Abuse Potential scores in families participating in the program.

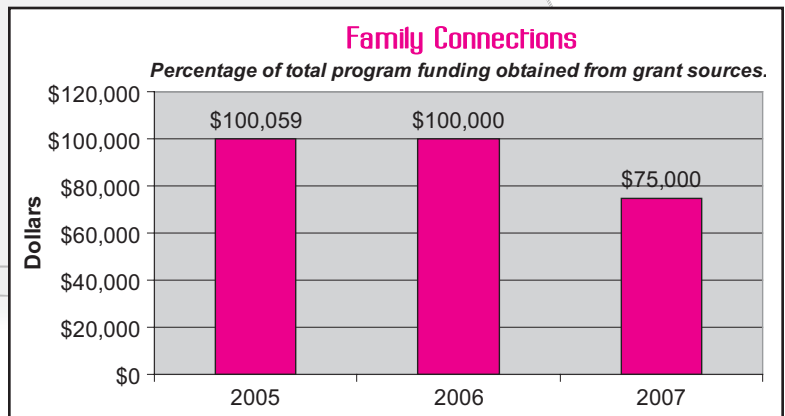
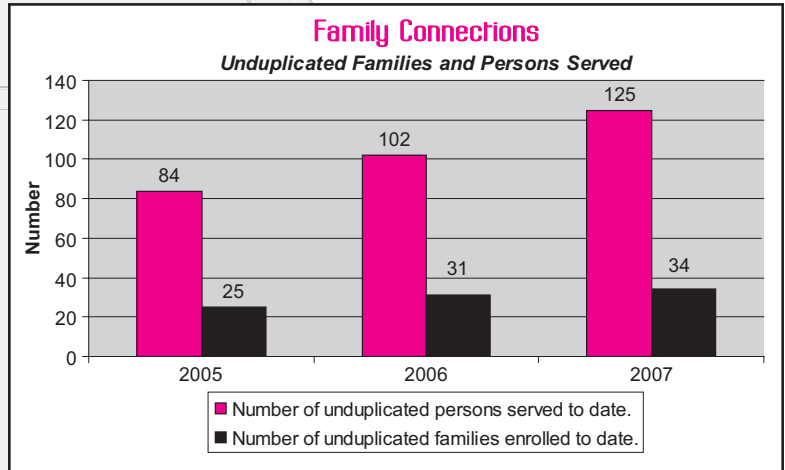
Since 2004, 125 unduplicated families have been served through Family Connections. Each family receives an initial assessment using the Child Abuse Potential Inventory and the Parental Stress Index. Reassessments are completed throughout enrollment, while services provided include the development of a family care plan, home visits, provision of a safe crib, if needed, discretionary funding, and more. Other services often sought include life skills development, parenting education, health and nutrition education, prenatal and well child care.

As can be seen from the graphs, the number of unduplicated families served since the program began has continued to climb, as well as the number of unduplicated families served annually. Although the number of families served has continued to increase, the grant resources for this program have continued to decline. Efforts are underway to identify additional grant resources to sustain Family Connections at the program's current funding level.

The level of participation from providers in the Provider Network has increased significantly in the last 12 months, with 31 providers serving as a lead agency on a case or cases for families enrolled in the Family Connections program.

Child Abuse and Neglect Probable Cause Rate (per 1,000)

Community	2002	2003	2004	2005	2006
Buchanan	7.59	8.41	10.27	7.21	5.92
Missouri	6.87	6.80	6.49	5.71	5.32



Cases of Substantiated Child Abuse and Neglect, 2006

Missouri - 7,593 (rate of 5.32 per 1,000)
 Buchanan - 1,314 (rate of 5.92 per 1,000)
 Andrew - 106 (rate of 1.61 per 1,000)



Janet Welch-Marshall, retired St. Joseph teacher, displays some of her handcrafted afghans and sweater sets for babies that she donated to Family Connections. Janet, who has written and published five romance novels in her retirement, says when she is not writing, she is crocheting. The beautiful and colorful afghans are each one-of-a-kind in shape and colors, the patterns having been "made up in my head—they just come to me!" The sweater and cap sets include a super-small size fit for a premie, and a "hoodie."

CORE RESULT:

Children and Families Safe and Healthy

Benchmarks:

- To reduce the percent of juveniles referred to the juvenile system.
- To reduce the child abuse and neglect probable cause rate.
- To reduce out-of-home placements.
- To increase the percent of children receiving appropriate immunizations.
- To reduce the percent of hospital admissions due to mental health disorders.



"I found friends that I can count on for anything and a room full of children that smile constantly & my children love it here."

—Jeannaua, mother of four, about the Circle of Parent support group meeting

"I learned to be open about things and how my life can be enjoyable with my daughter."

— Felicia, single mom of one

Did you know . . . in 2006-07, the Community Networker and service providers made 343 home visits to Family Connections families and a parent aide made additional visits totaling 345 units (50 minutes each)?

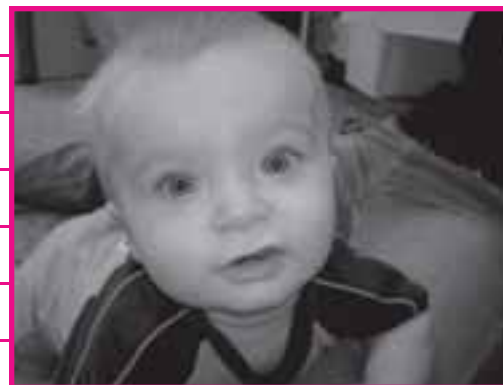
Family Connections Highlights

National Child Abuse Prevention Month. April was National Child Abuse Prevention Month, a time to raise awareness about child abuse and neglect and encourage individuals and communities to support children and families. The St. Joseph Youth Alliance undertook several events during the month of April 2007.

- **Blue Ribbons on Frederick Avenue.** Ribbons were crafted and posted along Frederick Avenue to create awareness about child abuse and neglect.
- **"Pinwheel for Prevention" Sales.** Pinwheels were sold for donations at Heartland Health and other locations, with funds used to support families receiving services through Family Connections. More than 500 pinwheels were sold.
- **Training Session for Educare Providers.** More than 60 child care providers were in attendance at a training session that put a face to child abuse and neglect. The training session covered the statistics of child abuse, types of abuse and neglect, characteristics of abusers, and how to report child abuse.
- **Presentation by Dr. Sheila Brookes.** Dr. Brookes is an assistant professor of family and consumer sciences at Northwest Missouri State University. She co-authored several chapters of the recently published book, "Keepin' On: The Everyday Struggles of Young Families in Poverty." She discussed issues raised in the book and answered questions from an audience of 35 community partners.
- **Presentations by Tina Feigal.** Tina Feigal, M.S., Ed., is the founder of the Center for the Challenging Child, LLC and author of several books that relate to improving experiences with children and students. Ms. Feigal presented to 35 community partners at the St. Joseph Public Library as a result of a presentation made at the May 2006 Prevent Child Abuse America national conference in San Diego. In addition, she was available for a special session with parents of children with learning and other disabilities the evening following her presentation to community partners. Approximately 25 parents attended.

In addition to activities held in April for National Child Abuse Prevention Month, the St. Joseph Youth Alliance held several other events and programs throughout the year. Following are some of the highlights.

- **"Take a Stand" Fundraiser for Child Abuse Prevention.** The St. Joseph Youth Alliance partnered with local businesses, nonprofits, and individuals to make this event a success. Bottled lemonade and water were sold from five stands throughout the greater St. Joseph community, generating a total of \$2,806. Many local business partners contributed to the effort by allowing sales of lemonade on their property or through discounts or donations. Funds raised were used to sustain the flexible funds for the Family Connections program.
- **Circle of Parents.** The St. Joseph Youth Alliance supports a parent support group known as Circle of Parents. There are two chapters of this support group, with a third under development. The support group offers parents a venue for discussing problems and solutions with other parents. The meetings are held two times per month, with approximately 30 individuals (parents and children) in attendance.
- **Safe Cribs.** The St. Joseph Youth Alliance provided safe cribs and safe sleep information to families to ensure infant safety.





Early Childhood

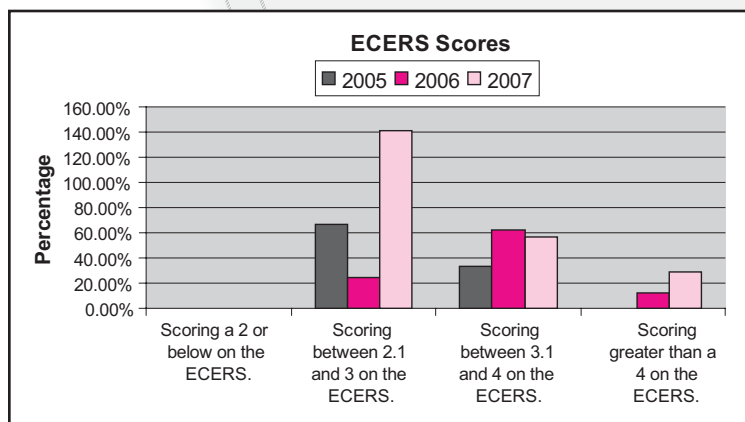
Educare

Educare works with child care providers to promote the growth and quality of early childhood care and school readiness for children. The goal for Educare is that more children enter Kindergarten "ready to learn". It is estimated that Educare impacted 1,335 children in fiscal year 2006-07.

Educare uses three environmental rating scales to assess programs for children at various ages:

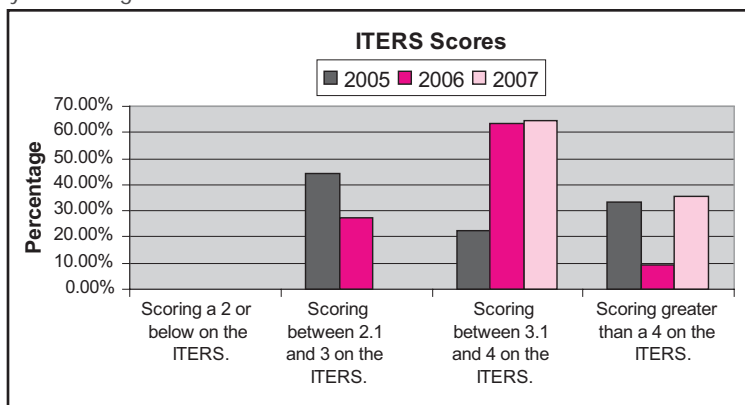
Early Childhood Environment Rating Scale

Designed to assess group programs for children of preschool through kindergarten age 2½ through 5.



Infant Toddler Environment Rating Scale

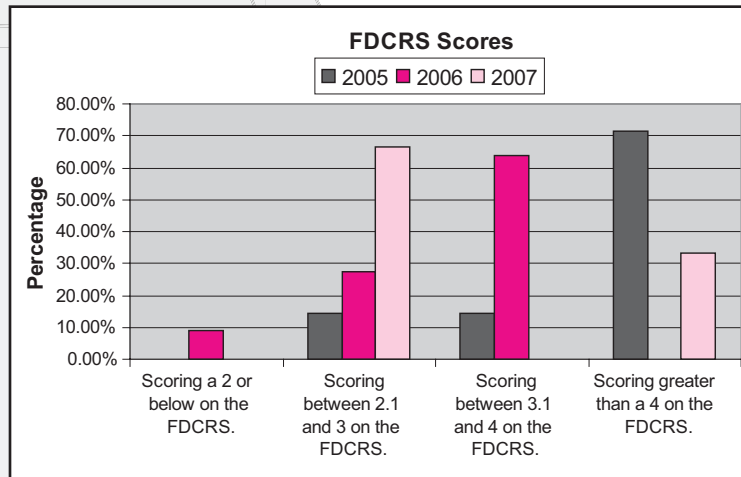
Designed to assess group programs for children from birth to 2½ years of age.



Did you know . . . Through the Educare program, child care providers in 11 counties in Northwest Missouri were offered technical assistance, education and training to improve the quality of early childhood care and school readiness for children.

Family Child Care Environment Rating Scale

Designed to assess family child care programs conducted in a provider's home for children from infancy through school-age.



Educare Highlights

- The Children's Fair is one of the largest and most popular annual events for young children. In 2007, more than 12 area agencies planned and organized the event which was held in April at the Civic Arena, with the theme, "Fairy Tales: Once Upon a Time". A total of 34 activity areas were manned by more than 165 adult, youth and agency volunteers. More than 1,071 children participated. Each child attending the event received a book and hands-on experience and learning opportunities. Additionally, the Missouri Lions Club hosted free eye and hearing exams that resulted in early intervention for some of the 51 children receiving hearing exams and the 71 children receiving eye exams.
- Educare collaborates with Child Care Resource and Referral to distribute the *Early Care Connection* newsletter. It is distributed monthly to 600 child care providers, community, and state partners throughout Northwest Missouri.



- Educare hosts monthly meetings that are routinely attended by 75-95 child care providers and provided 14 training hours. Topics covered in 2006-07 were based on core competencies and included topics such as Organization, Learning through Play, Speech & Language Developmental Milestones, Warning Signs & Early Intervention, Discipline, Child Abuse Reporting, Emergency Preparedness, and more.

CORE RESULT:

Children Ready to Learn and Succeeding in School

Benchmarks:

- To increase the percent of children entering kindergarten ready to learn.
- To increase the percent of students performing at the advanced or proficient level on the mathematics and communication arts sections of the Missouri Standardized Assessment Test (MAP).

- Story Hour is held monthly in collaboration with the St. Joseph Public Library. Registered providers bring children in their care to the library where Will Stuck, a children's librarian, reads books to the children. Following the story, Educare staff conducts children's activities and provide each child with items to meet basic needs or age appropriate toys.
- PAT Supporting Care Providers through Personal Visits is a curriculum for use with registered providers. All Educare staff was trained in the use of the curriculum and, subsequently, provided training to six providers through personal visits.



"Educare has helped me in so many ways. I was in the process of getting my license and was told that I needed a fenced in outdoor play area. They helped me obtain grant money to build not only the fence, but a large playground area for the children. I wouldn't have my CDA, NAFCC accreditation, or my degree right now if it wasn't for the staff at Educare." – Yolanda Derks

Child Care Early Accreditation

Childcare Accreditation provides funding through HB 1519 to child care programs that are committed to reaching beyond the minimum requirements defined by licensing and achieving recognized standards of excellence. The goal is for accredited homes and centers to voluntarily measure up to national standards of quality that have been established by state- recognized accrediting organizations.

The total funds received for child care early accreditation in fiscal year 2007 was \$80,128, of which \$21,626 was awarded directly for scholarships. The remainder of the funds were used for a variety of supports, including accreditation equipment and supplies, assessments and curriculum.



Child Care Early Accreditation Highlights

Yolanda Derks, owner of Derks Day Care, began working with the St. Joseph Youth Alliance as early as 2002. Her first encounter was through the Child Care Start Up and Expansion program, when she received start-up funds in 2002. She has worked closely with staff at the St. Joseph Youth Alliance in her endeavors to become licensed and accredited. Educare provided ongoing technical assistance through 2005 at which time she was turned over to Child Care Resource and Referral for the next phase for accreditation. In September 2006, Derks Day Care become accredited.

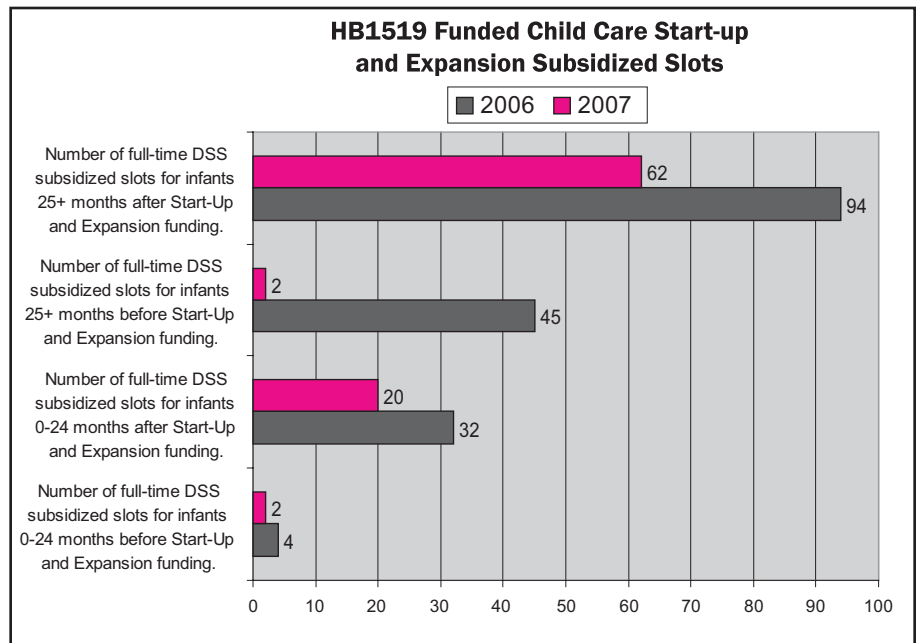
- **Early Accreditation Support Group** Several directors or owners who have received accreditation volunteer to mentor providers who are currently working toward accreditation.

Community education and awareness is **Marketed and Promoted** through educational programs such as Conscious Discipline® and High Scope®.

- **Conscious Discipline®** is a comprehensive classroom management program and a social-emotional curriculum, designed to make changes in the lives of adults and, in turn, change the lives of children. The St. Joseph Youth Alliance hosted a Conscious Discipline® training session in March 2007 with over 103 individuals in attendance.
- **High Scope®** emphasizes adult-child interaction, a carefully designed learning environment, and a plan-do-review process that strengthens initiative and self-reliance in children and young people. A 7-hour training session was held with 39 child care providers and classroom teachers on May 5, 2007, with training hours and CEU's available to participants.

Child Care Start-Up and Expansion

The goal of Child Care Start-up and Expansion is to increase the capacity of quality child care programs that offer care for infants and toddlers of low-income working families. It provides financial assistance to increase the capacity of quality child care programs that provide care for infants and toddlers of low-income working families. The graph below depicts the number of subsidized slots available for age 0-24 months and 25 months and older before and after funding. The slots are made possible through Partnership HB1519 funding. There were 82 slots as a result of 2007 funding.



Substance Abuse Prevention



The St. Joseph Drug Free Community Coalition works to positively change community attitudes and behaviors surrounding drugs, alcohol and tobacco, ultimately encouraging youth to choose substance free lives. Current funding is made available through the State Incentive Grant and a recently awarded Drug Free Communities federal grant.

Coalition members, both individuals and organizations, have invested significant time, energy and resources toward the issue of underage alcohol and substance use and prevention. From coalition-sponsored events such as the youth summit, Youth Action Coalition, and volunteer opportunities, to school district sponsored programs and curriculum and family-supporting programs like Strengthening Families, members are committed to this issue. The coalition membership exceeds thirty individuals and organizations, and investments total over \$750,000 since 2004.

SIG Grant Award – The St. Joseph Youth Alliance was awarded a State Incentive Grant for a Strategic Prevention Framework Project to address underage and binge drinking. The award was in excess of \$137,132 and targets Buchanan County youth ages 12-25 years old. A focal point of the grant is “Communities Mobilizing for Change on Alcohol”, a community organizing program designed to reduce adolescent access to alcohol by changing community policies and practices. The primary environmental strategy is youth asset development. Research shows that youth with more assets are more likely to be successful in life and school, as well as demonstrate more resiliency factors, reducing the likelihood of involvement with alcohol, drugs, and other risky behaviors.

St. Joseph Drug Free Community Coalition - The types of prevention capacity that are needed to address underage and binge drinking are programs that address the community’s acceptance of underage/binge drinking. The St. Joseph Youth Alliance was awarded a Drug Free Communities grant of \$100,000 per year for the next five years to increase prevention capacity.

St. Joseph Drug Free Community Coalition Highlights

- **Reach Out Now National Teach Ins** – The Reach Out Now program’s goal is to prevent underage drinking and fifth grade is not too early to start. Teach-Ins are an opportunity for prominent national, youth, state, and local leaders- using a research-based curriculum and other helpful materials provided by SAMHSA- to teach fifth and sixth graders, parents, teachers, and the community about the dangers of underage alcohol use and encourage young people to make healthy decisions. Nine teach-ins were conducted at different elementary schools in the St. Joseph area with 5th and 6th grade students, with over 776 students participating.
- **Education with the Blacksnakes** - St. Joseph Youth Alliance partnered for the second year with the minor league baseball team, the Blacksnakes, to have an alcohol free game at which 2,000 youth were in attendance. The Youth Alliance provided a stop underage drinking message to the youth prior to the game.
- **Safe Proms** - Over 100 businesses promoted a “celebrate sober” message by handing out business cards, stickers, table tents, letters to Junior & Senior parents, and placed “Stop Underage Drinking” messages on their business marquees during prom and graduation.
- **Supported Social Hosting Ordinance** – The Drug Free Community Coalition partnered with local businesses to raise awareness about social hosting and its ramifications through a “Stop Underage Drinking Campaign”. An ordinance was introduced by the City Police Department. In addition, advertisements were placed in the St. Joseph News Press and the following efforts were undertaken:
 - o **Door Mail** – Prevention messages were distributed to 15,000 homes in Andrew and Buchanan County; Parents Who Host Lose the Most materials were included in the packet.
 - o **Tray Liners** – Over 30,000 tray liners were used at various restaurants in St. Joseph.

Average Age of First Use	
Buchanan County	
Alcohol	11.8
Tobacco	11.2
Marijuana	12.6

Frequency of Use in Past 30 Days		
	% Reporting Use Ever	% Reporting 30 day use
Tobacco	31.7%	51.9%
Marijuana	15.4%	52.6%

% Reporting Use Past 30 days	
Alcohol	21.3%
Percent of those who answered 1 or more times drinking in past 30 days by number of day they drank	
0 days	5.0%
1-2 days	50.4%
3-5 days	16.7%
6-9 days	7.6%
10-19 days	10.6%
20-29 days	5.3%
All 30 days	4.4%



Data Source: 2006 Missouri Combined Youth Survey

- o Table Tents – Prevention messages were displayed on tables at seven restaurant locations.
- o Parents “Did You Know” Cards – Cards were distributed with every banking transaction at seven different banks in St. Joseph.
- o Marquees – 33 businesses posted prevention messages on their marquees.
- o Celebrate Sober cards – Cards were distributed by over 100 businesses during Prom season.
- **Community Readiness Assessment** – Interviews were conducted with eight community leaders in the St. Joseph area in follow-up to interviews previously conducted in 2004. In 2004, St. Joseph ranked 4.58 out of 9, which resulted in a preplanning/preparation stage – the highest of five communities participating in the community readiness pilot. The most recent readiness assessment was for two specific areas: Underage Drinking and Binge Drinking. For Underage Drinking, the community readiness score was 4.33 out of 9, which again reflects that the County is in the preplanning stage; for Binge Drinking, the score was 3.26 out of 9, which places the County in the “vague awareness” stage.
- **Alcohol Prevention Message Commercials** – Messages were aired on KQ2TV for Safe Prom; national commercials were used, however the St. Joseph Youth Alliance purchased use rights and added a tag line.
- **Memorial Tree** – In partnership with Buchanan County and the Community Drug Council, a ceremony was held where family members could recognize individuals who had lost their lives due to alcohol, drugs or acts of violence. The tree was on the courthouse grounds and was lit up during the Christmas holidays. The ceremony was led by Rev. Roger Lenander. Memorial donations of \$5 were donated in honor of family members and hung on the tree during the ceremony.

- **National Drunken and Drugged Driving Prevention Month** – A proclamation was signed by the County Commissioner and the Mayor for the month of December 2006 to promote awareness of the dangers of impaired driving and encourage fellow citizens to never drive under the influence of alcohol or drugs. As part of the awareness efforts, the St. Joseph Youth Alliance coordinated car displays on Belt and Frederick.



Help St. Joseph & Buchanan County STOP Underage Drinking

Average age of first use of alcohol in Buchanan County is 12 years old!

Did You Know...

- 31% of youth in Buchanan County have ridden in a car driven by someone under the influence of alcohol.
- Children who begin drinking alcohol before the age of 15 are 5 times more likely to develop alcohol problems than those who start after age 21.

Parent Tips ...

- Talk with your child about the dangers of underage drinking.
- Be a good role model.
- Remember that underage drinking is against the law.
- Disapprove of underage drinking.
- Talk to other parents about not providing alcohol at events your child will be attending.
- Create alcohol-free opportunities and activities in your home as teens will feel welcome.

Where Teens Get Alcohol

Teens have little difficulty obtaining alcohol, with adults often complicit in the process.

At a party ... 80%

From their home (without parent's knowledge) ... 67%

From their relative 21 or older ... 65%

From someone else's parent(s) ... 40%

Using a fake ID ... 36%

From their parents (with parent's knowledge) ... 32%

START TALKING BEFORE THEY START DRINKING

YOUTH ALLIANCE

PARENTS TAKE THE MOST

Don't Be a Party To UNDERAGE DRINKING It's the Law!

More children are killed by alcohol than all illegal drugs combined.

A project of the DRUG FREE COMMUNITY COALITION

For more information or to get involved, contact the St. Joseph Youth Alliance at 816-232-0590.

Perception of Risk or Harm				
	No Risk	Slight Risk	Moderate Risk	Great Risk
Driving Daily	10.5%	21.6%	28.2%	39.7%
Smoking Pack Cigarettes Daily	5.8%	8.9%	25.1%	60.2%
Trying Marijuana 1-2 Times	11.6%	20.4%	25.4%	42.6%
Smoking Marijuana Regularly	6.5%	5.7%	14.4%	73.4%

Data Source: 2006 Missouri Combined Youth Survey

Youth Mentoring

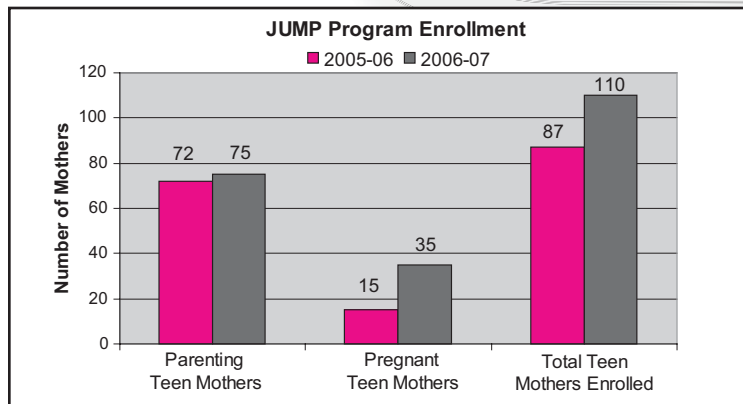
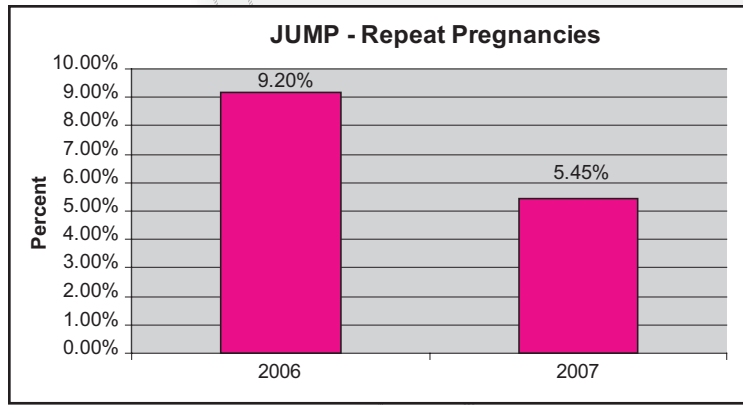


Journey to Unite Mentors & Parents (JUMP)

Journey to Unite Mentors & Parents (JUMP) provides education, support, home visits, and mentoring to teens facing the challenges of parenthood. The program provides young people with positive adult role models in the community and is a partnership between the St. Joseph Youth Alliance, Heartland Health and the YWCA. The primary objectives of the program are education completion, decreased repeat pregnancies, increased self sufficiency and school readiness for the infant or child.

JUMP Highlights

- **Car Seat Check**– In February 2007, Sgt. Sheldon Lions from the Highway Patrol conducted a car seat safety and training course at the Highway Patrol. Four car seats were traded out for new, safe car seats. Fifteen families participated in the event. Only one family (6.7%) had their car seat installed correctly.
- **Baby Shower** – The Church of the Nazarene sponsored a baby shower in October 2006 for mothers to be, donating decorations, refreshments and gifts.
- **Monthly Education Meetings** – JUMP hosts monthly education meetings on issues relevant to parenting. Topics included Read from the Start, breastfeeding, nutrition, safety, Shaken Baby Syndrome, domestic violence and more. A special nutrition session was conducted by a Parents as Teachers educator on how to make baby food.
- **Events** – JUMP hosted several events throughout the year, including walking groups, a Christmas Dinner, and the annual picnic. Enrolled parents were also invited to attend Women's Wellness events and Heartland's Heart Walk.
- **Infant Massage** – The objective of infant massage is to help young, new parents bond with their baby. Kelly McManus, Heartland Health, was trained in infant massage through the International Association of Infant Massage (IAIM). IAIM® trains and certifies Certified Infant Massage Instructors who in turn teach parents and caregivers to massage their babies. The number of new mothers interested in infant massage is growing, with infant massage groups meeting routinely.



JUMP Successes

- 100% of all high school seniors enrolled in JUMP graduated.
- 98% of the children of parents enrolled in the program had up to date immunizations.
- 19 parenting girls graduated with their diploma or GED.
- 100% of children of enrolled parents have a medical home.

"It was an excellent bonding experience. I learned which massage she enjoyed and which she didn't, thus becoming more aware of ways to calm her."

– Participant, JUMP infant massage class



Births to Teens (ages 10-17)

Community	2001	2002	2003	2004	2005
Buchanan	58	57	38	58	43
Missouri	2,938	2,785	2,691	2,767	2,660

CORE RESULT:

Youth Ready to Enter the Workforce and Children Ready to Learn
Benchmark:

- To increase the percent of students graduating from high school by age 18.
- To reduce the percent of births to teens.

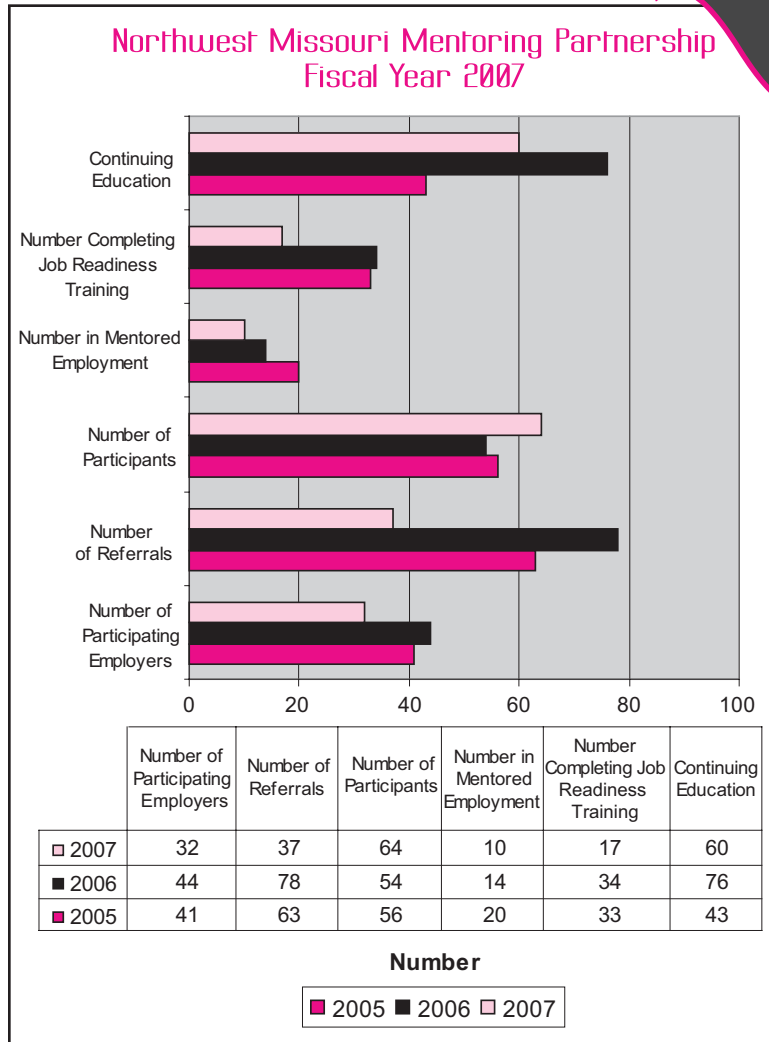
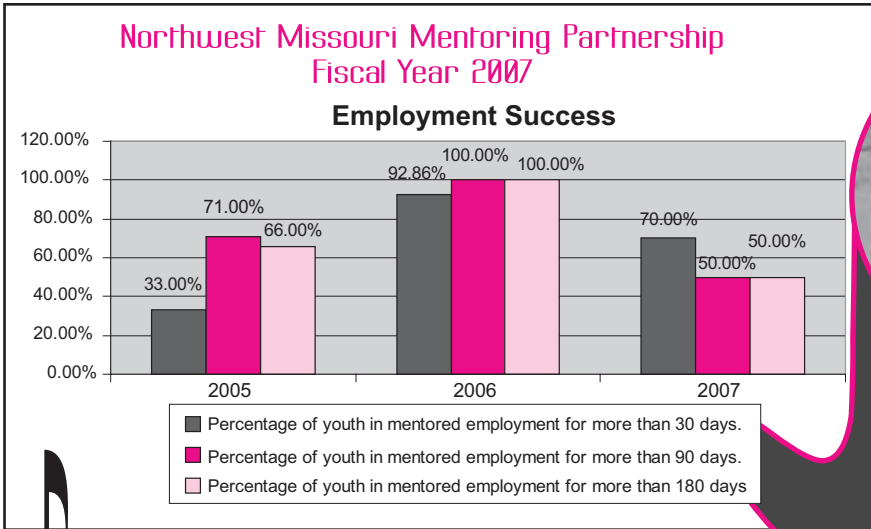
Northwest Missouri Mentoring Partnership

Northwest Missouri Mentoring Partnership offers 16-21 year olds the skills, tools, and references needed to find and retain employment with an on-the-job mentor. The goal of the program is to help youth gain employment skills and knowledge that can assist them in long-term employment as well as prepare them for future employment opportunities. **Maintaining Partnerships** with local business partners is an essential component of this program.



Missouri Mentoring Partnership Business Partners

- Bode Ice Arena
- Buchanan County Circuit Court
- Car City Chrysler
- Countryside Veterinary Clinic
- The Dillon Company
- Eagle Radio
- 1st Street Graphics
- Fazoli's
- Fern Thatcher Co.
- Hobby Lobby
- Houlihan's / Holiday Inn
- HyVee
- J. C. Penny's Portrait Studio
- Kovac's Grocery Store
- Meadowview Residential Care
- Hollywood 10
- Papa Murphy's Pizza
- Pizza Hut
- Roger's Green Hills
- Rolling Hills Consolidated Library
- Sack-N-Save Grocery Store
- Saint Joseph Parks, Recreation, and Civic Facilities
- St. Joseph Public Libraries
- Saint Paul Lutheran Childcare
- Sear's Portrait Studio
- Shoe Carnival
- Sonic Drive-In
- Spanky and Buckwheat's
- Stoney Creek Inn
- Taco Bell
- Taco John's
- Wendy's



Northwest Missouri Mentoring Partnership Highlights

- Rodney graduated from high school in 2006. He joined the Army Reserve and has been successful in his military career. Between his involvement with JROTC and the Worksite Mentoring program during high school, Rodney has been more outgoing and involved as a young adult. Rodney still drops by the office to say hello to all of the staff because of the relationships he formed with the St. Joseph Youth Alliance since 2003-04.
- Brittany was a quiet young lady who resided at a group children's home. Brittany graduated from Central High School in Spring 2007. She was able to find employment with a local restaurant, but had to move on due to unforeseen circumstances. In Fall 2007, she enrolled in a bible college and is pursuing an education and career in youth ministry.
- Alexandra is a 17-year-old young mother taking classes at Even Start. At first, her mother wanted to make sure that she focused on nothing but getting her high school diploma so that she could support her small child. However, when her mother found out what MMP was trying to do for her daughter, she wanted Alexandra to participate in the job readiness classes that Worksite Mentoring provided at Even Start. Alexandra successfully completed the class and is still working toward high school graduation.

Youth Asset Development

Youth Volunteer Corps of America

The mission of the Youth Volunteer Corps of America (YVC) is to create and increase volunteer opportunities to enrich America's youth, address community needs and develop a lifetime commitment to service. In 2006, the St. Joseph Youth Alliance recruited YVC volunteer Mary Helen Vanderpool to work with local youth. Her efforts resulted in a wide array of activities and events that provided youth with leadership, volunteer, and service learning opportunities.

A recent national study determined that young people engaged in service opportunities are less likely to engage in risky behavior, are more likely to feel connected to their communities and do better in school than their counterparts who don't volunteer. This is why the St. Joseph Youth Alliance has increased efforts to provide structured volunteer opportunities through the Youth Action Coalition's (YAC) YAC-Attack Summer Program. YAC is a youth governance council that works to promote service learning opportunities in the community.

Contributions made by youth who are passionate about connecting with our community sometimes are under-celebrated. This report is an effort to capture their commitment to a better community and future and to celebrate their achievements.

AmeriCorps

The St. Joseph Youth Alliance has continued to seek funding through AmeriCorps for youth asset development, applying for and receiving an AmeriCorps grant. The funds will be used to engage a team of AmeriCorps Members to reduce substance use and abuse among youth and strengthen collaboration among community partners by engaging adults, **Mobilizing People**, activating all sectors of the community, expanding and enhancing programs, and influencing decision makers and opinion leaders to support youth asset development.

Youth Empowerment through Service (YES)

YES chapters are autonomous units that perform community service in partnership with St. Joseph Youth Alliance. YES chapters can be any group of youth that performs community service as part of the group's normal routine. With volunteers from the recently awarded AmeriCorps grant, the St. Joseph Youth Alliance will have a strong leadership role in engaging partners and youth in service learning projects throughout the community.



Youth Empowerment through Service



Youth Volunteer Corps



Measures	2006	2007
Number of unduplicated Youth Volunteers who participated in YVC activities.	150	157
Total Number of Youth Volunteer hours provided by the YVC team.	702	1128.25
Number of YVC projects completed by the YVC team.	17	24
Number of agencies/organizations/groups assisted by the YVC program.	11	16

- **National Youth Service Day.** The St. Joseph Youth Alliance partnered with Heartland Foundation and InterServ to host a "Poverty Luncheon". Approximately 25 youth participated. The Poverty Lunch involved a class-selected meal that used the poverty line to budget for food. The project accomplished several different goals: it broadened students' understanding of their own social class histories, it helped students understand the politics, history, realities, and challenges of the "poverty line"; and it built a sense of community and collaborative learning for the group.
- **Healthy Communities Summit.** Several Youth participated in a youth forum to dialogue about Martin Luther King Day. The group generated ideas for projects to implement on national days of service.
- **YAC - Attack Summer Programs.** The St. Joseph Youth Alliance organized a summer program for youth. Some of the organizations that benefited from youth volunteers during the summer program included M'Shoogy's, YWCA, St. Joseph Fire Museum, Habitat for Humanity, Military Heritage Museum, Open Door Food Kitchen, Arbor View Nursing Home, Carriage Square Nursing Home, Red Cross, and Patee Park Baptist Food Pantry.
- **Youth Summit.** Six youth attended the Youth Volunteer Corps Youth Summit. The four-day summit was held in Parkville, Missouri.



Americorps Team

Tucker Leadership Lab. The St. Joseph Youth Alliance took a group of youth to the Tucker Leadership Lab at William Jewell College. Tucker Leadership Lab uses an experiential training model for all its services. Attendance provides participants a safe "lab" environment to identify desired leadership skills and allows them to practice those skills. Using an experiential model also means applying the learned skills back in the "real world." Participants were encouraged to take the skills they learned and practiced, and apply the skills back into their lives.



Juvenile Diversion. The St. Joseph Youth Alliance provides training in the True Colors character analysis. True Colors teaches people how to discover their greatest strengths and understand the strengths of others. The training session is held quarterly with approximately 30 parents and children. Youth participating in the trainings are encouraged to get involved in community service/volunteerism.

Risk Factor Comparison from 2004 to 2006

Measure	2004	2006	Percent Change
Percentage of Buchanan County students reporting they believe it is only a little bit wrong or not wrong at all for someone their age to drink beer, wine, or hard liquor.	24.4%	20.2%	-17.2% ↓
Percentage of Buchanan County students who think there is either no risk, or only a slight risk, of harm in drinking one or two alcoholic drinks nearly every day.	30.8%	32.1%	4.2% ↑
Percentage of Buchanan County students who think adults in their neighborhood would consider it only a little bit wrong, or not at all wrong for kids to drink alcohol.	15.0%	16.1%	7.3% ↑
Percentage of Buchanan County students who indicated none of their four closest friends had tried alcohol when their parents did not know about it.	37.5%	53.5%	42.7% ↑

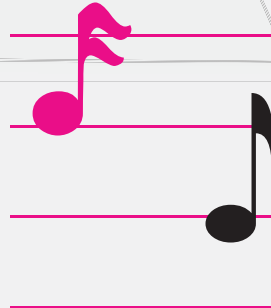


Source: Missouri Student Survey

Other Benchmarks & Indicators

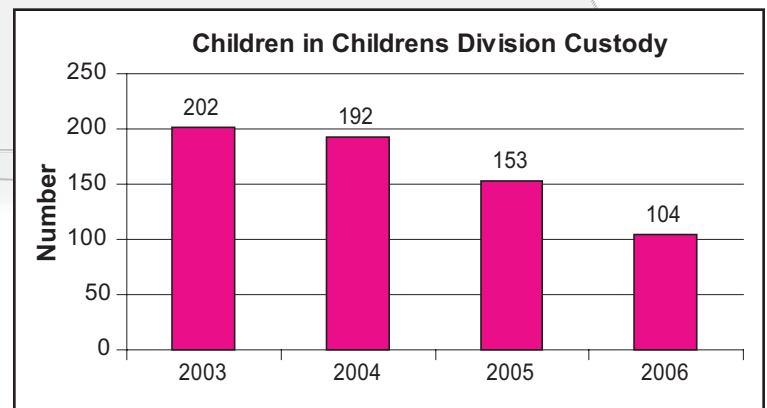
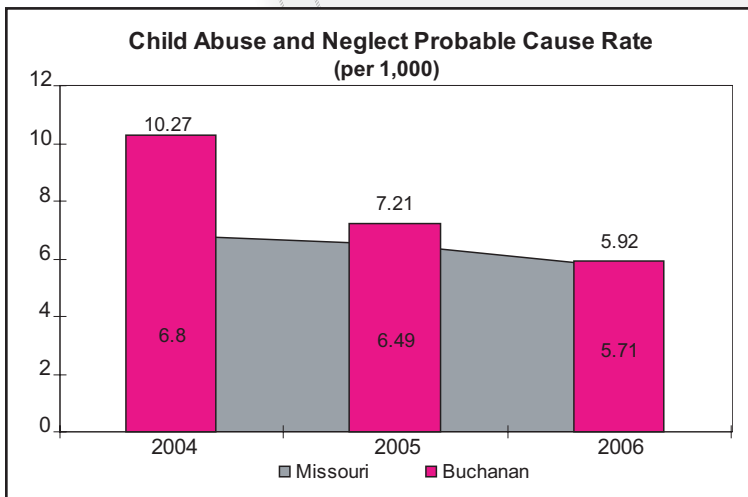
Child Abuse and Neglect

During fiscal year 2006-07, there were 14 initial Child Abuse Potential Inventory assessments conducted with families enrolled in Family Connections for which results were on file. The average CAPI score of the 14 assessments combined was 218. Of the 14 individuals assessed, 50% had scores over 200, the marker for risk of child abuse; 35% had scores over 300. In addition to the CAPI scores, the Parental Stress Index was also given. Results were on file for 11 individuals. Of the 11 assessments, 55% had scores over 80, with 27% having scores over 100. Monitoring the potential for child abuse is a preventive measure that allows for early intervention. Early intervention and programs creating awareness about child abuse and neglect may be influencing the drop in child abuse and neglect substantiated rates.



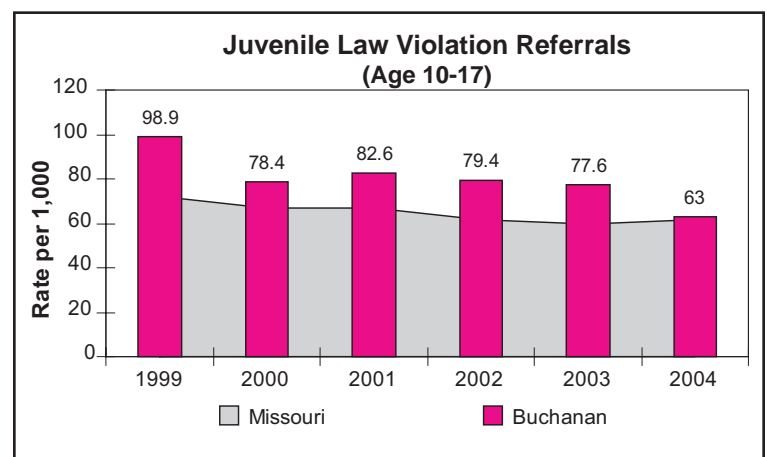
Children in Children's Division Custody

The rate of children in the custody of the Children's Division continues to decline. The rate is the lowest it has been since 2000, with a 48.5 percent decrease from 2003 to 2006.



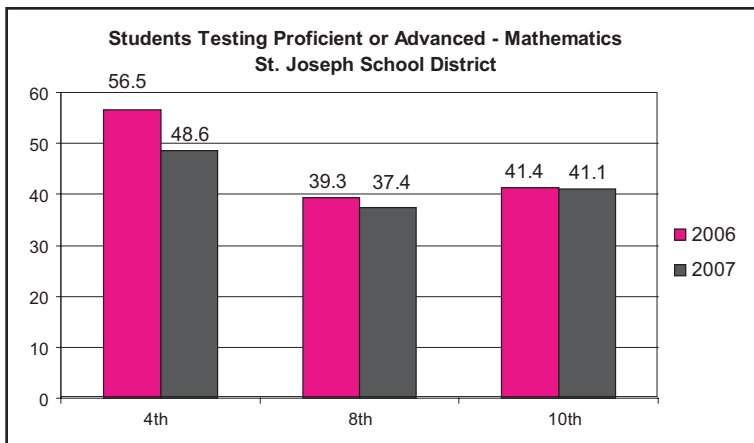
Juvenile Law Violation Referrals

Juvenile law violations have continued to decrease and are just slightly higher than the Missouri rate of 61.4. Buchanan County has experienced a 36.3 percent decrease in juvenile law violation referrals since 1999.



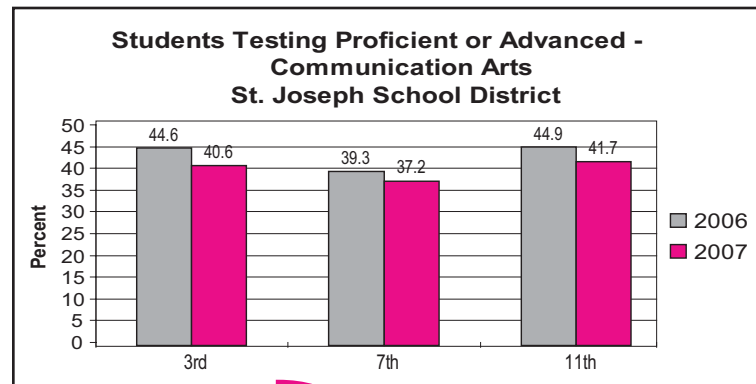
Mathematics MAP Scores

The following graph reflects the percentage of students testing "Proficient or Advanced" using the standard MAP test (conducted in 4th, 8th and 10th grades). As depicted in the graph, scores have remained relatively constant from last year for grades 8 and 10. The 4th grade scores, however, showed a 14 percent decline.



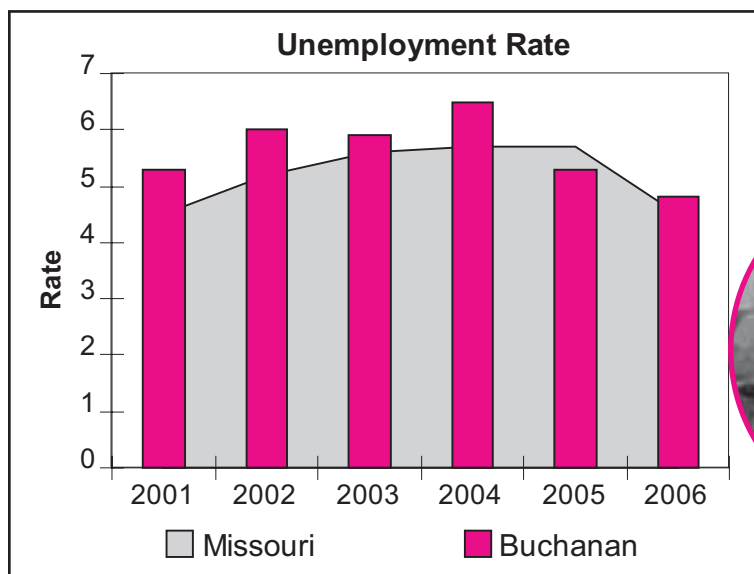
Communication Arts MAP Scores

The following graph reflects the percentage of students testing "Proficient or Advanced" using the standard MAP test (conducted in 3rd, 7th and 11th grades). The percentage of students testing proficient or advanced in Communication Arts declined in all three grades from 2006 to 2007. The largest decrease was experienced by students in the 3rd grade, with a 9 percent decrease.



Unemployment Rate

The annual average unemployment rate for Buchanan County was at 5.5% for 2006, a 9.4 percent decrease from 2005.



Blacksnakes Game



Substance Abuse Prevention

The following data for Buchanan County is from the Missouri Student Survey, which is conducted every other year in the schools. The study was conducted in 2004, and again in 2006. Participating school districts were required to survey 9th graders and were additionally requested to survey two more grades, of which one was an even number grade.

30-Day Alcohol Use:

During the past 30 days, how many times have you had at least one drink of alcohol?

Number of Times	2004	2006	% Change	
0 times	60.2%	78.7%	30.7%	↑
1-2 times	11%	10.3%	-6.4%	↓
3-5 times	5%	3%	-40%	↓
6-9 times	3.6%	2.7%	-25%	↓
10-19 times	2.5%	2.6%	4%	↑
20-39 times	1.3%	1.1%	-15.4%	↓
40 or more times	1.1%	1.6%	45.5%	↑

The table above indicates that there has been a decline in the number of students who reported drinking in the past thirty days prior to the survey.

Binge Drinking – Past Two Weeks:

Think back over the last two weeks. How many times have you had five or more alcoholic drinks in a row?				
	2004	2006	% Change	
None	73.9%	89.1%	20.6%	↑
Once	4.0%	4.8%	20.2%	↑
Twice	2.6%	2.2%	-15.4%	↓
3-5 times	2.1%	1.4%	-33.3%	↓
6-9 times	1.1%	0.8%	-27.3%	↓
10 or more times	1.1%	1.6%	45.5%	↑

The survey also revealed the following information related to the number of drinks consumed in a row. Five or more drinks in a row is considered binge drinking. As the above table reflects, there was a 20.2 percent increase in the number of students who reported binge drinking at least one time in the past two weeks. Additionally, the number of students reporting binge drinking 10 or more times increased by 45.5 percent. However, this data also reflects that 89 percent of youth had not binged in the past two weeks.

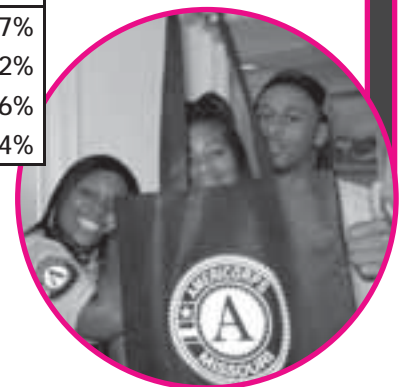
Perception of Risk or Harm				
	No Risk	Slight Risk	Moderate Risk	Great Risk
Driving Daily	10.5%	21.6%	28.2%	39.7%
Smoking Pack Cigarettes Daily	5.8%	8.9%	25.1%	60.2%
Trying Marijuana 1-2 Times	11.6%	20.4%	25.4%	42.6%
Smoking Marijuana Regularly	6.5%	5.7%	14.4%	73.4%

**START TALKING
BEFORE THEY
START DRINKING**
www.stopalcoholabuse.gov

Age of First Use of Alcohol:

How old were you when you first had more than a sip or two of beer, wine, or hard liquor (for example vodka, whiskey, or gin)?				
	2004	2006	% Change	
Never	37.9%	54.4%	43.5%	↑
8 or younger	7.3%	7.2%	-1.4%	↓
9	2.5%	2.7%	8%	↑
10	4.2%	3.5%	-16.7%	↓
11	3.8%	3.7%	-2.6%	↓
12	8.2%	5.5%	-32.9%	↓
13	11.0%	11.0%	0	
14	6.9%	8.1%	17.4%	↑
15	3.4%	2.8%	-17.6%	↓
16	0.5%	0.2%	-60%	↓
17	0.0%	0.0%	0	
18 or older	0.1%	0.1%	0	

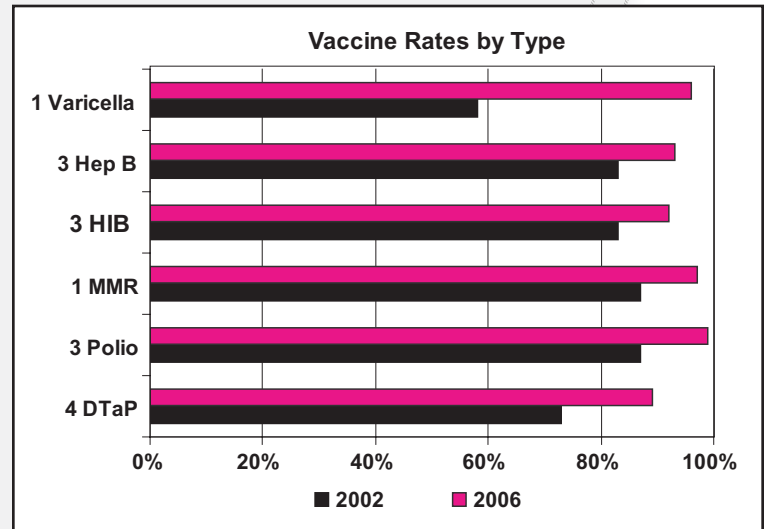
In comparing results from 2004 to 2006, the percentage of students reporting never having taken a sip of alcohol increased significantly. Overall, the average age of first use of alcohol in Buchanan County, Missouri is 11.76 years old.



Other Benchmarks & Indicators

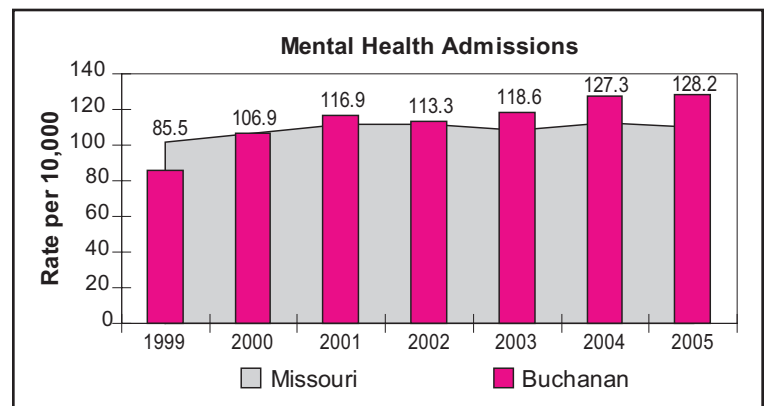
Immunization Rate

The immunization rate for children receiving the 4-3-1-3-3 series at Lakeside Pediatrics continues to steadily increase.



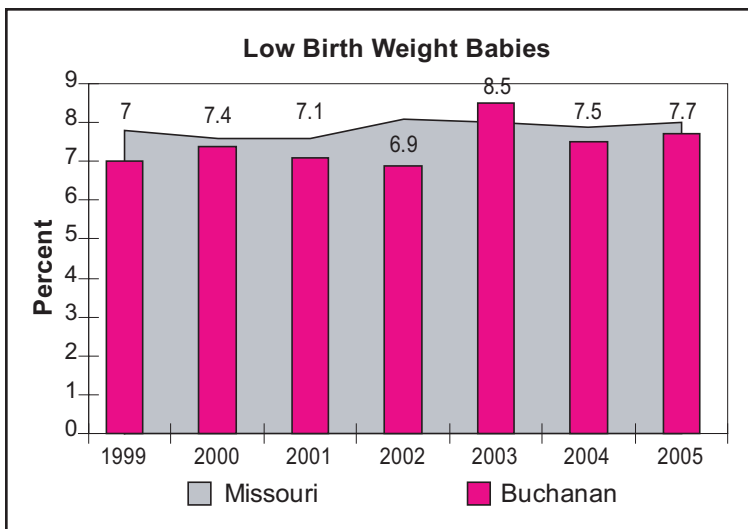
Mental Health Admissions

Mental health inpatient hospitalizations in Buchanan County have been steadily on the rise since 1999. Since 1999 the rate per 10,000 has increased from a rate of 85.5 to 127.3. This is a 49.9 percent increase since 1999 and a 0.7 percent increase from 2004 to 2005. The rate for Buchanan County is significantly higher at 128.2 than for Missouri at 110.0.



Low Birth Weight Babies

The percentage of low birth weight babies increased by 2.7 percent from 2004 to 2005, yet the rate is still lower than the Missouri rate of 8.0.



Thank You For Tuning In



The St. Joseph Youth Alliance takes great pride in serving as a leader for our community in crisis intervention, early childhood, and youth asset development, substance abuse prevention, and mentoring. Without community partners, we would not be able to achieve the goals and objectives that have been set forth by our funders. The countless hours, donations and resources that are contributed by community leaders, volunteers, youth, faith community, media, and various agencies and organizations among many others, are the truest measure of community partnership.

Although it is in our mission to **Maintain Partnerships**, it is the partnerships collectively that help us **Mobilize People, Maximize Potential, and Manage Priorities**. The St. Joseph Youth Alliance thanks all of the individuals who have played a role in **Modeling Prevention, Mentoring Parents** and **Marketing/Publicizing** events and programs. It is because of your involvement that the St. Joseph Youth Alliance is successful in **Multiplying Possibilities** for our community's children and youth.

The Youth Alliance is also proud of its new facility and location. Located on South Leonard, the new facility provides staff with a warehouse, large conference room for youth and other program activities, more office space, a full kitchen, parking and easy access.

The future is promising, with many new endeavors on the horizon.

Stay tuned in ...





St. Joseph Youth Alliance Membership

Agency Membership

- America's Second Harvest Food Bank
- American Red Cross
- Buchanan County Academy
- Buchanan County Prosecuting Attorney
- Buchanan County Sheriff's Department
- Catholic Charities
- Community Action Partnership
- Community Housing Ministries
- Department of Parks & Recreation
- Department of Social Services
- Family Guidance Center
- First Lutheran Church
- Heartland Health System



St. Joseph Youth Alliance Staff

Front Row (left to right): Linda Midyett, Angie Reynolds, Kelly Tudor, Robin Hammond, Gayle Babcock, Neva Carrel
Back Row (left to right): Irene Walker, Julie Wiedmer, Mayme Abbott, Anita Jolly, Nick Brothers, David Rich, Susie Cook, Fran Brothers

Individual Membership

- Inter/Serv
- King's Kids
- M & I Bank
- MO Department of Health & Senior Services
- MO Division of Alcohol & Drug Abuse
- MWSU – Public Safety
- Noyes Home for Children
- Peace Unlimited, Inc.
- Preferred Family Healthcare
- St. Joseph Public Library
- St. Joseph Safety Council
- St. Joseph School District
- St. Joseph Police Department
- United Cerebral Palsy
- United Way of Greater St. Joseph
- University of Missouri Extension
- Workforce Investment Board
- YWCA

- Dan Brachman
- Mary Ann Brachman
- Jason Callaway
- Colin Cline
- Barbara Martin
- Julie Rhoades
- Jack Teegarden
- Rep. Ed Wildberger, District 27



Leadership Team

Clockwise: Anita Jolly, Linda Midyett, Susie Cook and Robin Hammond

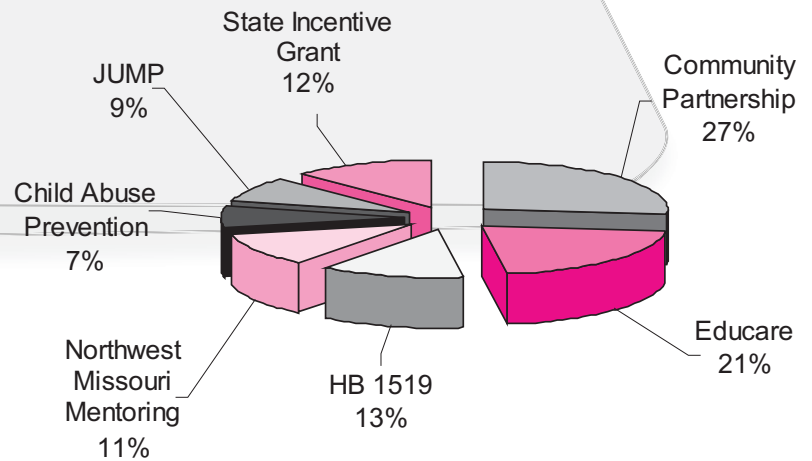
Resources

The St. Joseph Youth Alliance has managed or administered numerous programs since 1991 and has expended more than \$16 million in local, federal, state and grant resources since 1995, alone. With an operating budget of just over \$1.09 million for fiscal year 2006-07, the St. Joseph Youth Alliance sustains the Community Partnership, Educare, Early Childhood Education and Care Accreditation and Start-Up and Expansion, Northwest Mentoring Partnership, JUMP, and Family Connections.

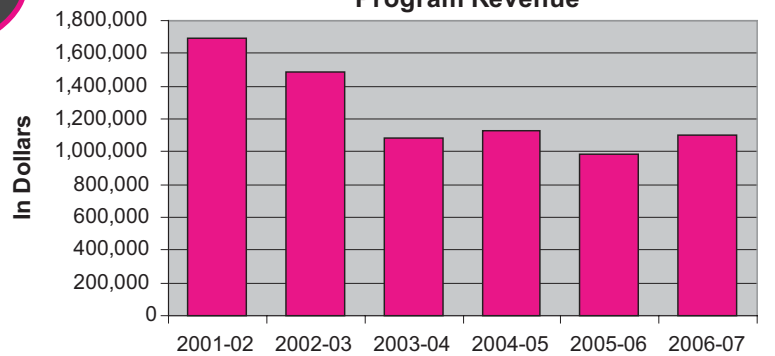
Since 2004, the Youth Alliance has also taken a stronger leadership role in the prevention of youth substance abuse, increasing funding for programs that place an emphasis on decreasing youth substance use and encouraging youth asset development through a State Incentive Grant initiative.

The charts below illustrate that resources to support programs and services of the organization are increasing. This is a result of a significant emphasis on grant writing and planning. The St. Joseph Youth Alliance continues its resource development efforts through an active Resource Development Committee, comprised of Board members, community partners and resource development consultants. Volunteer contributions are also a significant source of support for the Youth Alliance, with 3,301 volunteer hours valued at \$56,551 and cash donations of \$5,048, for a total of \$61,599.

St. Joseph Youth Alliance Investment Breakdown



St. Joseph Youth Alliance Program Revenue





Data Sources

Page 5

Child Abuse and Neglect Probable Cause Rate; Department of Social Services, Missouri Children's Division FY 2006 Report.
Family Connections Unduplicated Families and Persons Services; and Family Connections Percentage of Total Program Funding; Family Connections primary data.
Cases of Substantiated Child Abuse and Neglect, 2006; Department of Social Services, Missouri Children's Division FY 2006 Report.

Page 7

ECERS, ITERS, FDCRS Scores – Educare primary data.

Page 8

HB 1519 Funded Child Care Start-Up and Expansion Subsidized Slots; HB1519 Child Care Start-up and Expansion primary data.

Page 9

Average Age of First Use; Percent Reporting Use Past 30 Days; and Frequency of Use in Past 30 Days; Department of Mental Health, 2006 Missouri Combined Youth Survey.

Page 10

Perception of Risk or Harm; Department of Mental Health, 2006 Missouri Combined Youth Survey.

Page 11

JUMP Repeat Pregnancies; and JUMP Referrals the Program; JUMP program primary data.
Births to Teens; Missouri Department of Health and Senior Services.

Page 12

Northwest Missouri Mentoring Partnership Employment Success and Measures; Missouri Mentoring Program primary data.

Page 13

Youth Asset Development Measures; Missouri Department of Mental Health, 2006 Missouri Combined Youth Survey.

Page 14

Risk Factor Comparison from 2004 to 2006; Missouri Department of Mental Health, 2006 Missouri Combined Youth Survey.

Page 15

Child Abuse and Neglect Probable Cause Rate; Department of Social Services, Missouri Children's Division FY 2006 Report.
Children in Children's Division Custody; Department of Social Services, Children's Division.
Juvenile Law Violation Referrals; Missouri Kids Count 2006.

Page 16

30 Day Alcohol Use; Binge Drinking-Past Two Weeks; Age of First Use of Alcohol; and Perception of Risk or Harm; Missouri Department of Mental Health, 2006 Missouri Combined Youth Survey.

Page 17

Low Birth Weight Babies; Missouri Kids Count, 2006.
Immunization Comparison; Missouri Department of Health and Senior Services and Youth Health Partnership.
Mental Health Admissions; Missouri Department of Health and Senior Services

Page 21

St. Joseph Youth Alliance Investment Breakdown; and St. Joseph Youth Alliance Program Revenue; St. Joseph Youth Alliance Revenue Matrix.





Report Designed and Prepared by:

COMMUNITY ASSET BUILDERS, LLC

606 Dix Road
Jefferson City, MO 65109
CABLLC@earthlink.net
(573) 632-2700